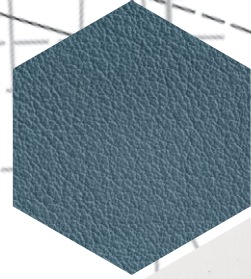
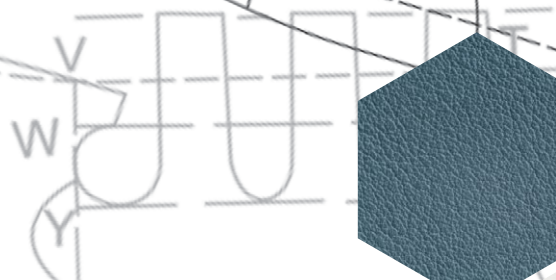
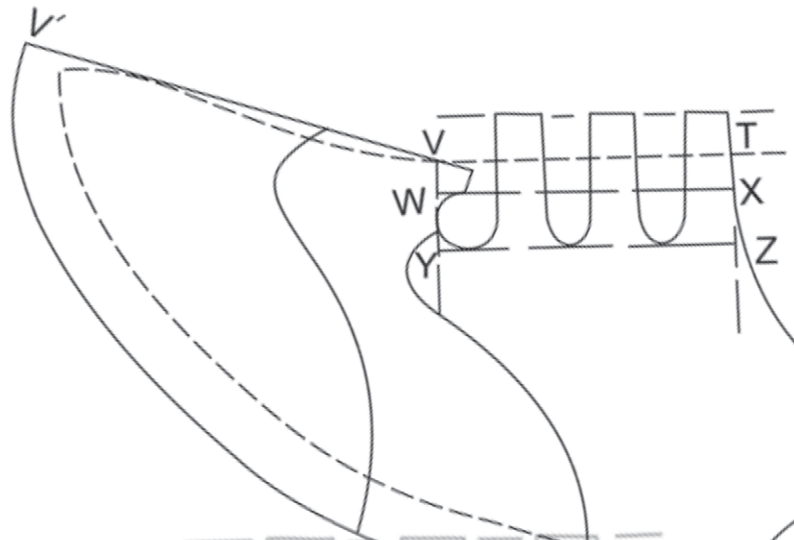
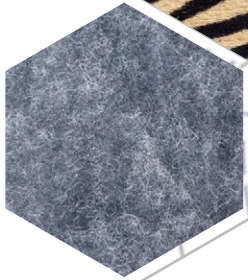





ORTOPEDIJOS TECHNIKA

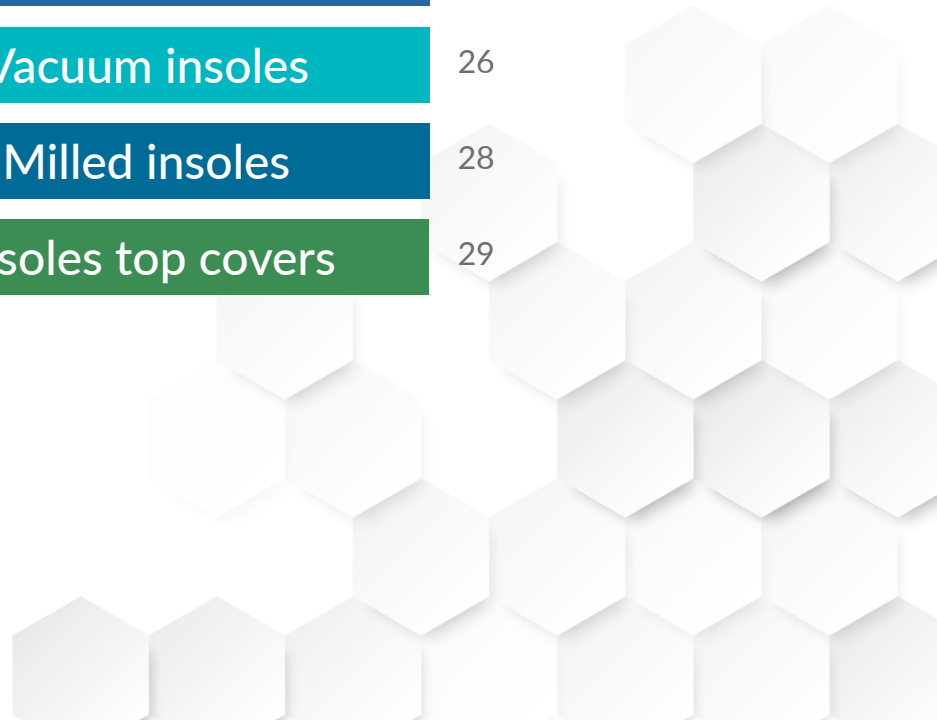
MATERIALS

2024-1





Leathers	1
Textiles	8
Linings	10
Paddings	12
Stiffenings	13
Fastenings	15
Welts	16
Midsole materials	17
Boardings	18
Soles	19
Molded soles	25
Vacuum insoles	26
Milled insoles	28
Insoles top covers	29



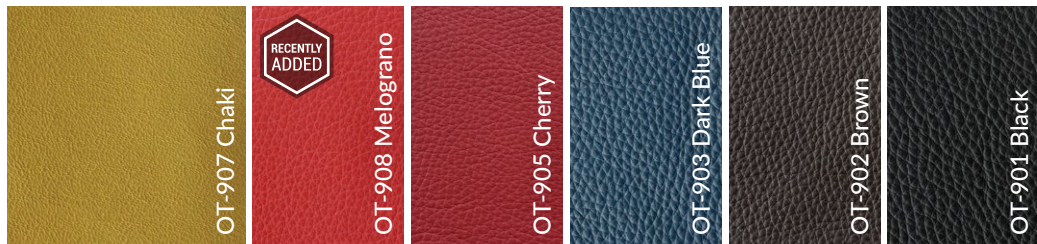
LILY

Thickness
1.0-1.2 mm



SETA

Thickness
1.3-1.5 mm



TULIP

Thickness
1.1-1.3 mm



ART

Thickness
1.1-1.2 mm



MOUSSE

Thickness
1.0-1.1 mm



SNAKY
Thickness
0.9-1.1 mm



VELVET
Thickness
0.9-1.0 mm



VOLCANO
Thickness
0.9-1.1 mm



PURESOFT
Thickness
1.1-1.3 mm



LUMIÈRE -
LIPSTICK

Thickness
0.9-1.1 mm



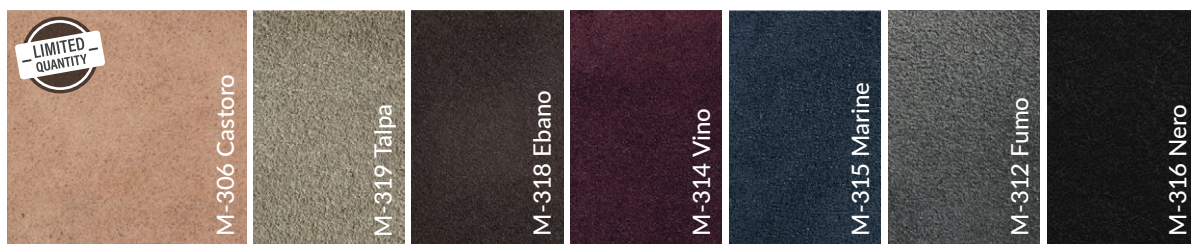
CRONOS

Thickness
0.9-1.1 mm



VANESSA

Thickness
0.8-1.0 mm



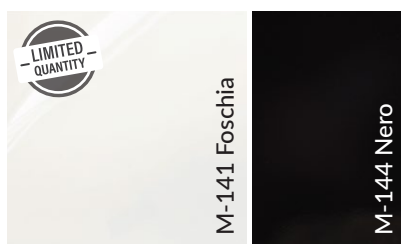
COCCO
OYSTER

Thickness
0.9-1.0 mm



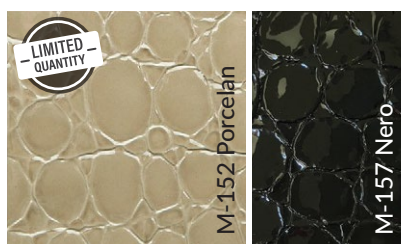
SOUPLESSE

Thickness
0.9-1.0 mm



BOMBAY

Thickness
0.9-1.0 mm



JAIPUR PEARL

Thickness
0.9-1.1 mm



VEDETTE

Thickness
1.1-1.3 mm



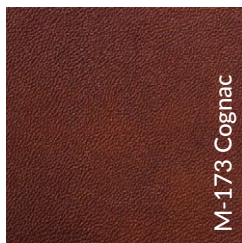
KIDEPO

Thickness
0.8-0.9 mm



MEDICI

Thickness
1.2-1.4 mm



BOXLIGHT

Thickness
1.0-1.2 mm



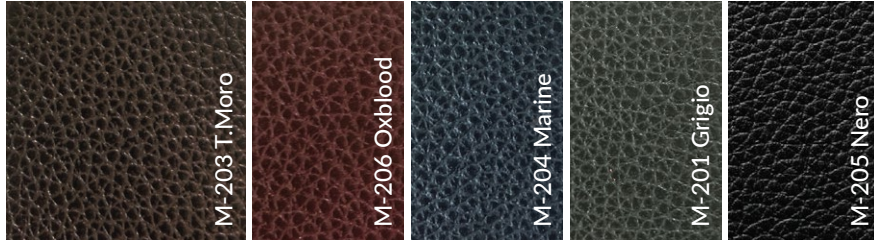
COLORADO

Thickness
1.1-1.3 mm



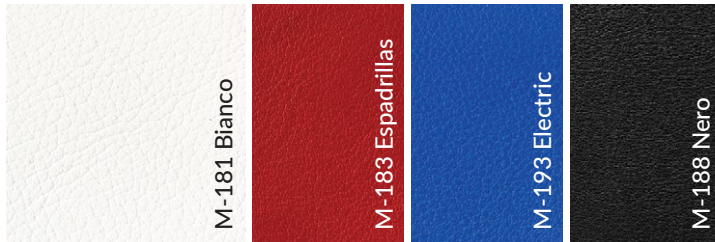
IMPRUNETA

Thickness
1.4-1.6 mm



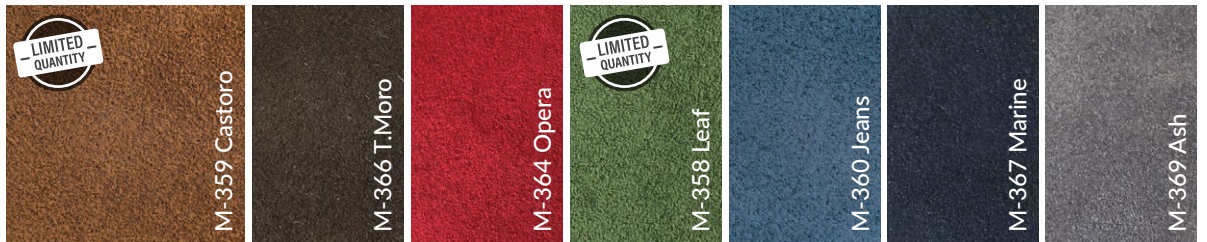
SPORTLUX

Thickness
1.3-1.5 mm



HUNTER

Thickness
1.6-1.8 mm



**SURVIVAL
HYDRO**

Thickness
1.4-1.6 mm



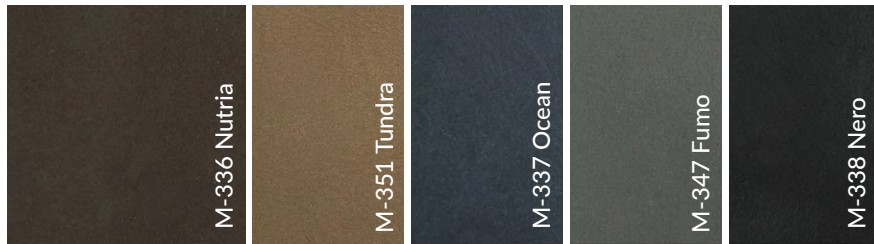
ESPRIT

Thickness
1.2-1.4 mm



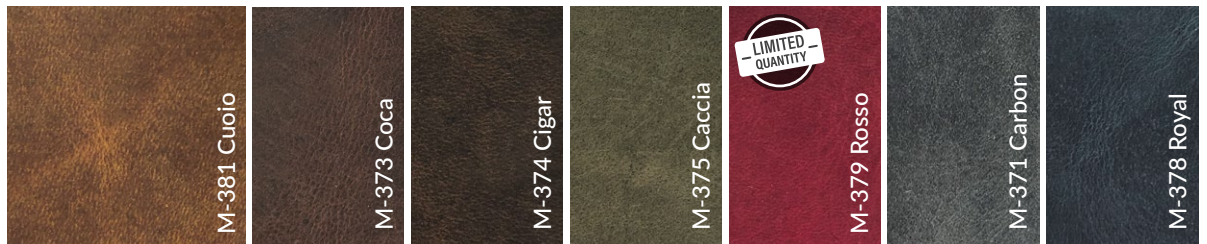
TIFFANY
HYDRO

Thickness
1.3-1.5 mm



ONTARIO
HYDRO

Thickness
1.5-1.7 mm



PAMPA
HYDRO

Thickness
1.7-1.9 mm



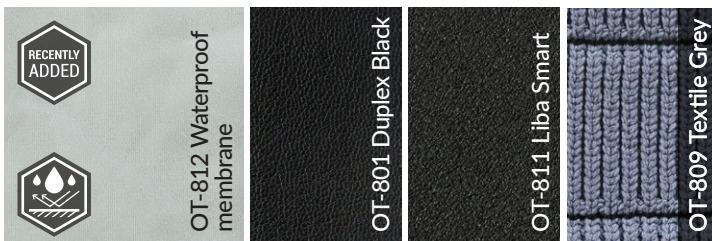
HEAVY
DUTY

Thickness
2.0-2.2 mm





SPECIAL MATERIALS



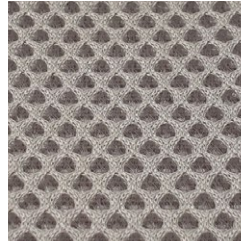
Waterproof

BREATHABLE

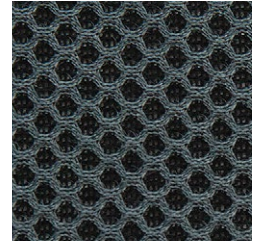
TX21
White



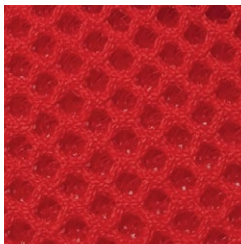
TX20
Light grey



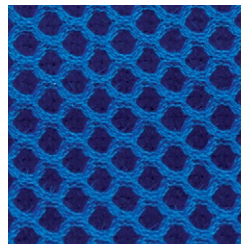
TX22
Gris grey



TX10
Red



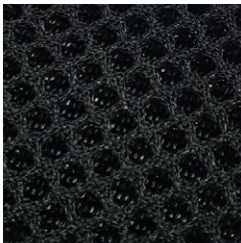
TX23
Azul blue



TX24
Marine

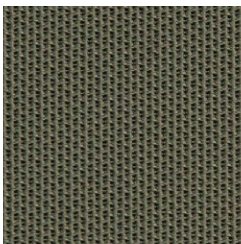


TX07
Black

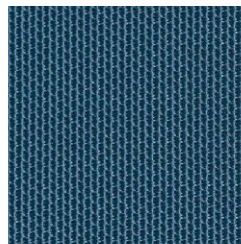


ELASTIC

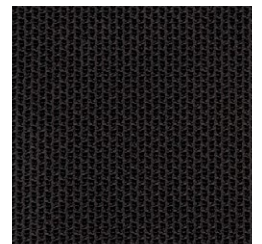
TX27
Chaki with
padding



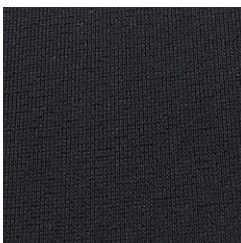
TX25
Jeans with
padding



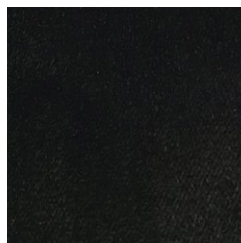
TX26
Black with
padding



TX18
Elastic black



TX19
Tricot negro



TX29
Stretchable
black



DURABLE

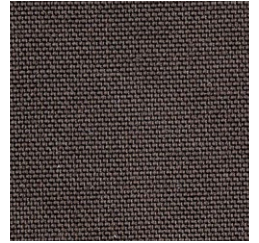
TX30
Camouflage



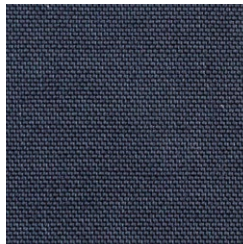
TX31
Cordura black



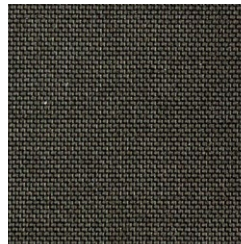
TX32
Cordura brown



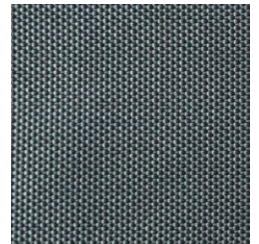
TX33
Cordura blue



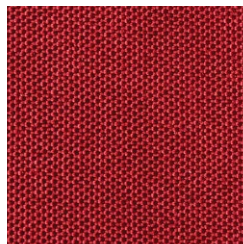
TX34
Cordura chaki



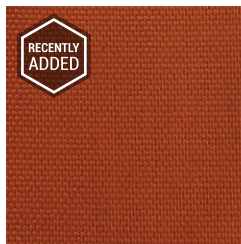
TX35
Cordura grey



TX37
Cordura granate



TX38
Cordura Teja



RECYCLED

TX28
Recycled cotton
black



Recycled material

NATURAL LEATHER

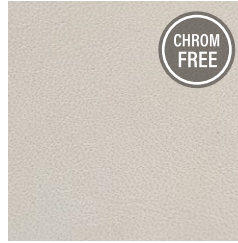
LN02

Calflining cream,
0.7-0.9 mm



LN45

Natura lining burro,
1.0-1.1 mm



LN26

Lamnappa naturel,
0.7-0.9 mm



LN22

Calflining camel,
0.9-1.1 mm



LN24

Calflining nero,
0.7-0.9 mm



SOFT

LN43

Foam laminated
suede beige,
4 mm



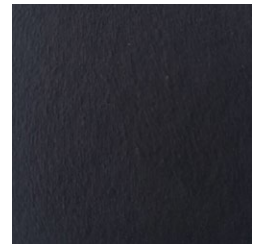
LN38

Foam laminated
suede chocolate,
4 mm



LN39

Foam laminated
suede nero,
4 mm



THERMO

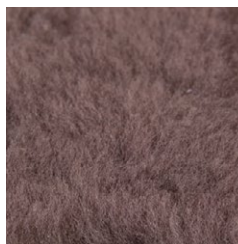
LN28

Natural fur
off white



LN30

Natural fur
brown



LN52

White thermo
with membrane



LN27

Natural fur
black



LN42

Puratex,
3.2 mm



LN44

Foam laminated
velour dark grey,
4 mm



Waterproof

BREATHABLE

LN47
DuraFit PLUS,
1.1 mm



LN48
Foam laminated
black



LN06
Foam laminated
PE flisse black,
4 mm



TX39
Textile black,
3 mm



RECYCLED

LN46
Recycled
camel,
1 mm



Recycled material

LATEX

SFM 01-09
8 mm

SFM 02-09
3 mm

SFM 03-09
5 mm



PU FOAM

SFM 04-81
3 mm

SFM 05-81
5 mm

SFM 06-81
8 mm



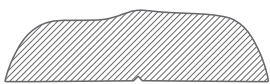
ZEG

SFM 07-81
3 mm

SFM 08-81
5 mm



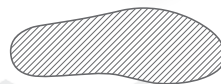
SOFT	Erkoflex			STM 20 (1,8 mm)	Erkoflex			STM 10 (3 mm)	TEPP2			STM 21 (1 mm)
	Eva 35 Sh			STM 27 (3 mm)	TALYN			STM 28 (1 mm)				
	Interflex			STM 09 (1 mm)	MAX			STM 15 (1,5 mm)	MAX			STM 16 (1,1 mm)
	Leather			STM 11 (1,8-2 mm)	Rhenoflex			STM 17 (1,5 mm)	Rubberflex			STM 26 (1,7 mm)
	Ibiflex			STM 12 (2 mm)	Thermoflex			STM 14 (1,5 mm)				



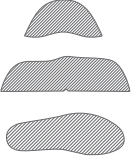
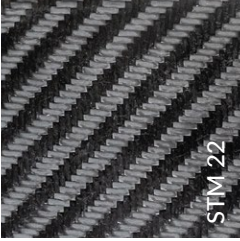
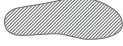

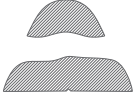

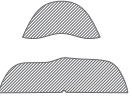


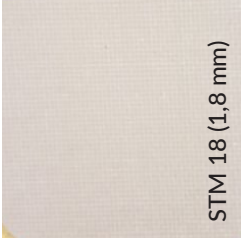


HEEL COUNTER

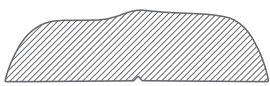


TOE CAP

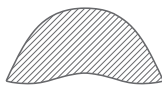


BRANDSOLE

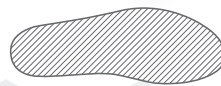
HARD	<p>Pre-preg</p>   <p>STM 22</p>	<p>Carbon</p>   <p>STM 24 (1,5-2 mm)</p>	<p>Simona</p>   <p>STM 25 (3 mm)</p>
	<p>Polypropylene transparent</p>   <p>STM 23 (4 mm)</p>	<p>Rhenoflex</p>   <p>STM 18 (1,8 mm)</p>	<p>Metal toe cap</p>  



HEEL COUNTER



TOE CAP



BRANDSOLE

EYELET · HOOK · TEXTILE HOOK · STUD · BUCKLE



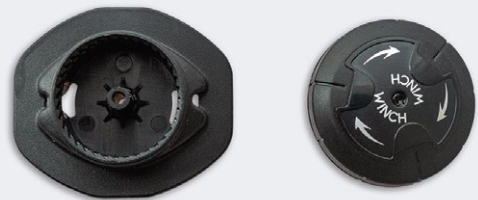
QUICK LASING SYSTEM

For quarter



Black

For tongue



Black

Magnetic (for tongue/quarter/heel)



Black

Cord locks



Black

EVA



1-09 1-82 1-81



4-23 4-25 4-26



3-19 3-17 3-41



6-09 6-17



3-46 3-56 3-78 3-81



6-46 6-81

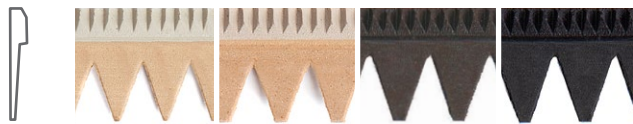
RUBBER



24-46 24-81 24-17



36-17 36-19 36-81



26-19 26-17 26-46 26-81



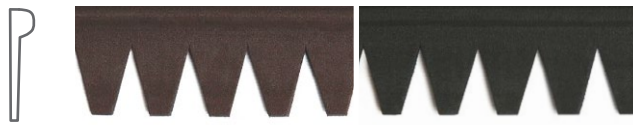
39-46 39-81



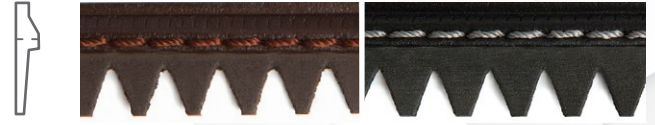
31-17 31-46 31-81



42-81



32-46 32-81



44-46 44-81

LEATHER



7410021 7410020



7411241 7411240



7411210 7411214



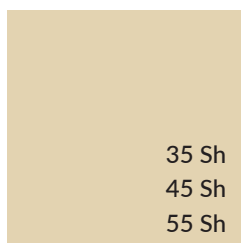
7411290



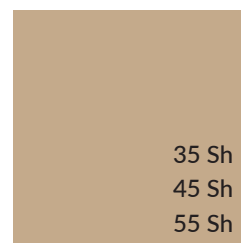
EVA
09 White



EVA
19 Light beige



EVA
17 Dark beige



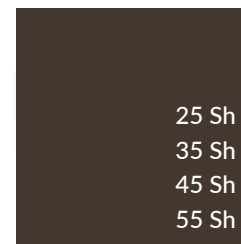
EVA
41 Taupe



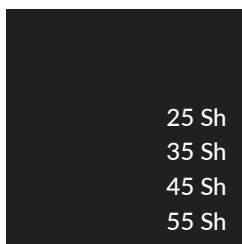
EVA
56 Grey

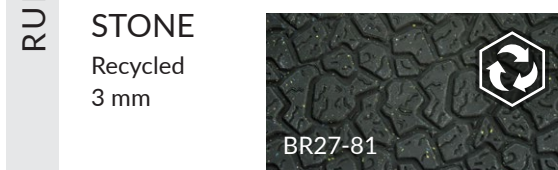
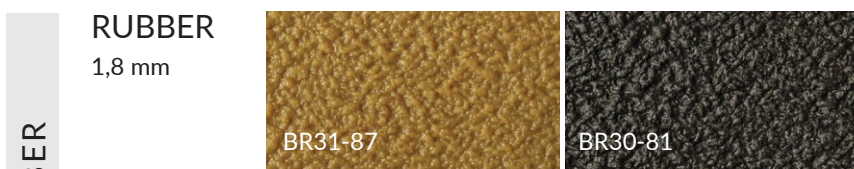
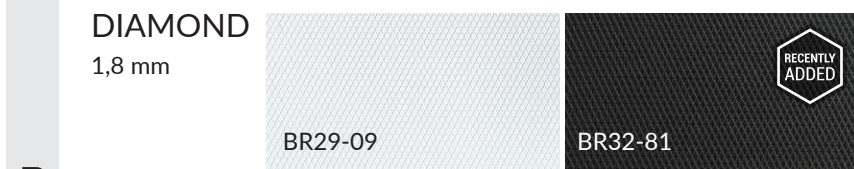
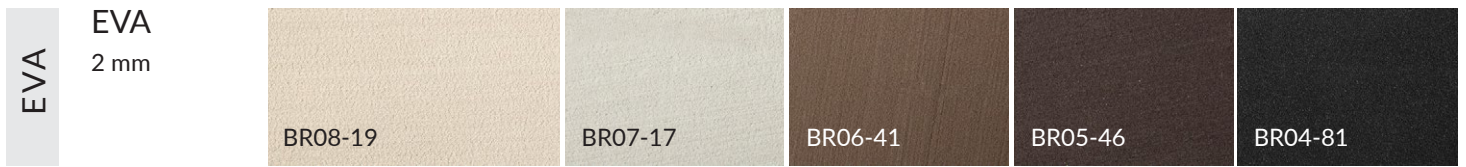


EVA
46 Brown






EVA
81 Black





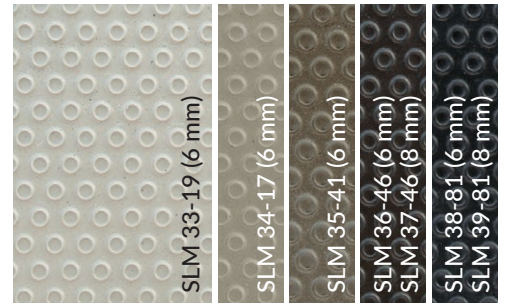
Super New Flex
35 Sh

- Durability 
- Lightness/softness 
- Anti-slip 



Blue Clasik 701
50 Sh

- Durability 
- Lightness/softness 
- Anti-slip 



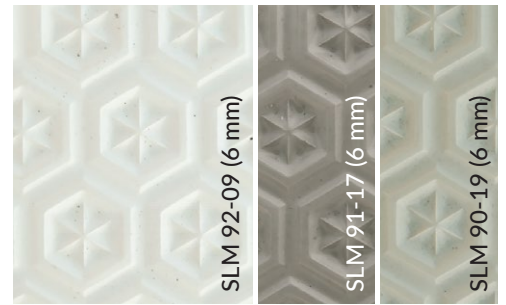
Vibram 8870
45 Sh

- Durability 
- Lightness/softness 
- Anti-slip 





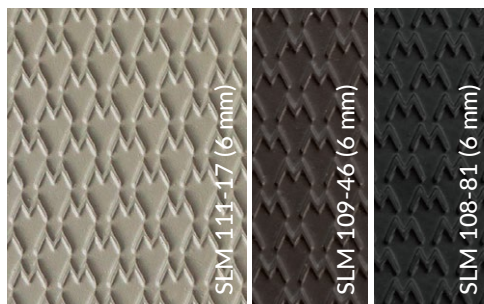
Astro-Star
50 Sh

- Durability 
- Lightness/softness 
- Anti-slip 





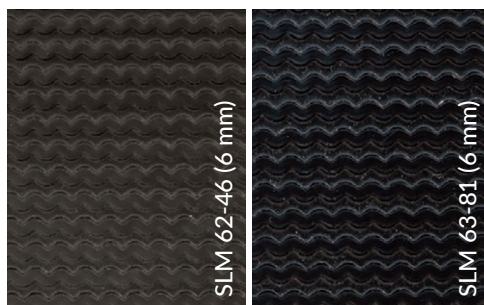
Swallow
45 Sh

- Durability 
- Lightness/softness 
- Anti-slip 






Vibram Mandorlo
45 Sh

- Durability 
- Lightness/softness 
- Anti-slip 



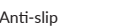


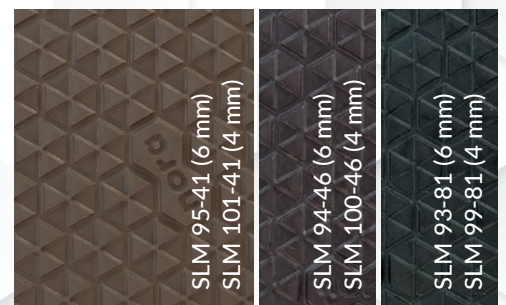
Astrolight
50 Sh

- Durability 
- Lightness/softness 
- Anti-slip 

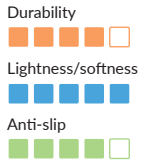


Pluriball New Flex
50 Sh

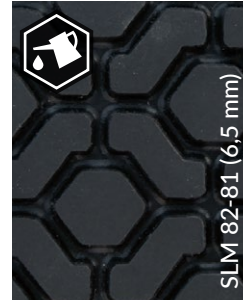
- Durability 
- Lightness/softness 
- Anti-slip 



Stone Recycled
50 Sh



Contol
65 Sh



Topy Cellulux
55 Sh



Nylon Topy



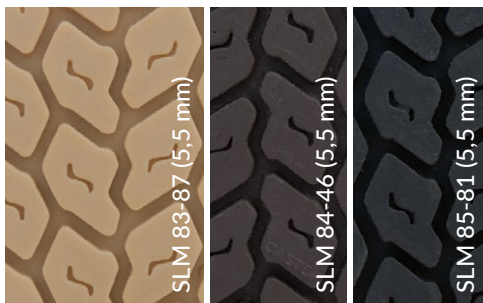
Crepina Soft
60 Sh



Vibram Claw
60 Sh



Autoband
65 Sh



Resistant to oil and acid



Recycled material

Vibram 446

- Durability
- Lightness/softness
- Anti-slip



81

Vibram 1220

- Durability
- Lightness/softness
- Anti-slip



81

Vibram 1319

- Durability
- Lightness/softness
- Anti-slip



81

Vibram 2002

- Durability
- Lightness/softness
- Anti-slip



09

81

Vibram 2609

- Durability
- Lightness/softness
- Anti-slip



46

81

Vibram 2644

- Durability
- Lightness/softness
- Anti-slip



46

81

Vibram 2667

- Durability
- Lightness/softness
- Anti-slip



46

81

Vibram 2668

- Durability
- Lightness/softness
- Anti-slip



46

81

Vibram 2690

- Durability
- Lightness/softness
- Anti-slip



81

Vibram 528

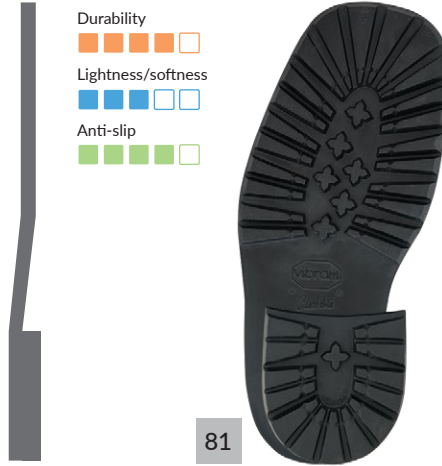
- Durability
- Lightness/softness
- Anti-slip



46 81

Vibram 2603

- Durability
- Lightness/softness
- Anti-slip



81

Vibram 2655

- Durability
- Lightness/softness
- Anti-slip



46 81

Vibram 2678

- Durability
- Lightness/softness
- Anti-slip



81

Vibram 2810

- Durability
- Lightness/softness
- Anti-slip



46 81

Flensburg

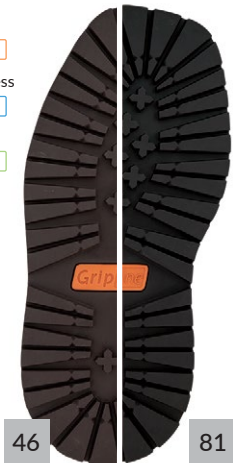
- Durability
- Lightness/softness
- Anti-slip



81

Grip Line 505

- Durability
- Lightness/softness
- Anti-slip



46 81

Kiel

- Durability
- Lightness/softness
- Anti-slip



81

Lubeck

- Durability
- Lightness/softness
- Anti-slip



81



Resistant to oil and acid



Antistatic

Mammoth

- Durability: 5 orange squares
- Lightness/softness: 4 blue squares, 1 white square
- Anti-slip: 5 green squares



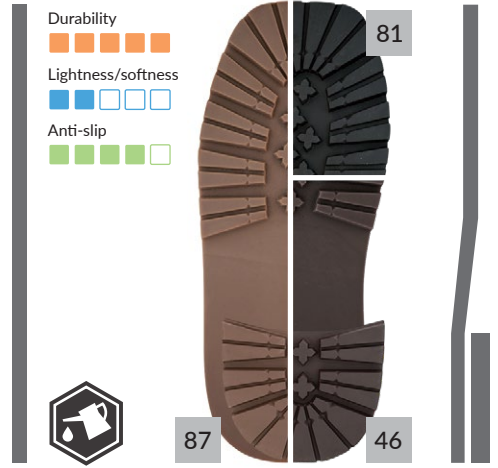
Sportflex

- Durability: 4 orange squares, 1 white square
- Lightness/softness: 4 blue squares, 1 white square
- Anti-slip: 5 green squares



5001

- Durability: 5 orange squares
- Lightness/softness: 4 blue squares, 1 white square
- Anti-slip: 5 green squares



Venus

- Durability: 4 orange squares, 1 white square
- Lightness/softness: 4 blue squares, 1 white square
- Anti-slip: 5 green squares



Ventosa

- Durability: 4 orange squares, 1 white square
- Lightness/softness: 4 blue squares, 1 white square
- Anti-slip: 5 green squares



Carrion

- Durability: 4 orange squares, 1 white square
- Lightness/softness: 4 blue squares, 1 white square
- Anti-slip: 5 green squares



Vibram 586

- Durability: 4 orange squares, 1 white square
- Lightness/softness: 5 blue squares
- Anti-slip: 5 green squares



Vibram 9105

- Durability: 5 orange squares
- Lightness/softness: 4 blue squares, 1 white square
- Anti-slip: 5 green squares



Roccia Block

- Durability: 5 orange squares
- Lightness/softness: 4 blue squares, 1 white square
- Anti-slip: 5 green squares



Resistant to oil and acid

Sole leather

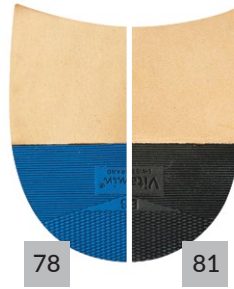


SLM 02 (4-4,5 mm)

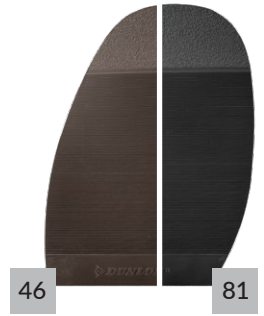
Anti-slip Sole - 52



Anti-slip Heel - 52



Anti-slip Sole



WOODEN AND LEATHER HEELS

Nr. 2



Nr. 6





LEFA



← Heel

← Heel tap

Shell PU1662

- Durability 
- Lightness/softness 
- Anti-slip 




Size

40-45

81



Nadia

- Durability 
- Lightness/softness 
- Anti-slip 




Size

36-41

81



Nel

- Durability 
- Lightness/softness 
- Anti-slip 



Size

37-41

81



Boston



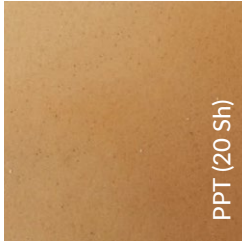
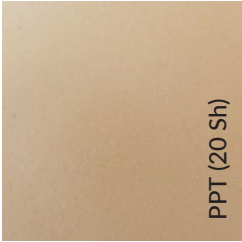




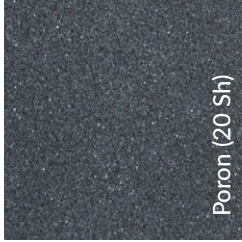
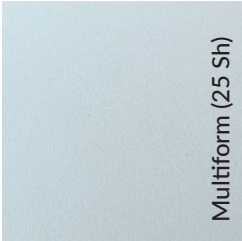
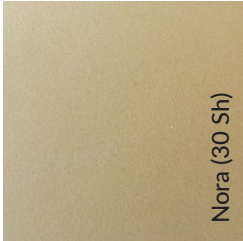
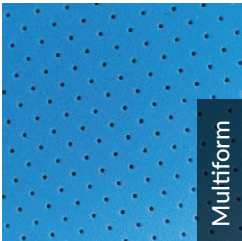



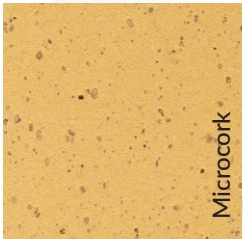

- Durability 
- Lightness/softness 
- Anti-slip 

Size

39-45

81



15-30 Sh	IM 24 4 mm 12 mm	 Plastazote (15 Sh)	IM 23 6 mm	 Multiform (15 Sh)	IM 21 1.6 mm	 PPT (20 Sh)
	IM 02 3.2 mm	 PPT (20 Sh)	IM 26 6 mm	 New flex (20 Sh)	IM 28 2 mm	 Multiform (30 Sh)
	IM 22 6.4 mm	 PPT (20 Sh)	IM 29 1.5 mm	 Poron (20 Sh)	IM 30 3 mm	 Poron (20 Sh)
	IM 13 15 mm 25 mm	 Multiform (25 Sh)	IM 09 4 mm 6 mm	 Nora (30 Sh)		
35 Sh	IM 11 4 mm	 Multiform	IM 12 4 mm	 Multiform	IM 14 5 mm 7.5 mm 10 mm 15 mm	 Multiform
	IM 27 5 mm 10 mm 20 mm	 Multiform	IM 06 5 mm 10 mm	 Microcork	IM 31	 EVA

45 Sh

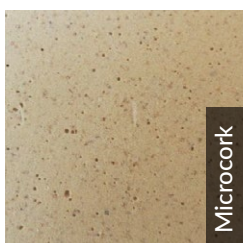
IM 32



55 Sh

IM 05

4 mm
6 mm
10 mm

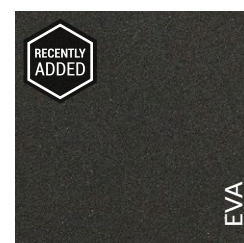


IM 25

3 mm
5 mm
10 mm
15 mm



IM 33



BM02



30 Sh., 6 mm

25 Sh., 15 mm

For children preventing insoles

BM03



35 Sh., 15 mm

25 Sh., 15 mm

For elastic sport insoles

BM04



25 Sh., 15 mm

25 Sh., 15 mm

For patients with diabetes and rheumatism

BM06



60 Sh., 6 mm

25 Sh., 15 mm

For daily orthopedic adult insoles

BM07

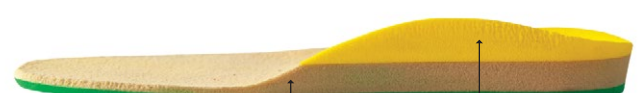


60 Sh., 6 mm

35 Sh., 15 mm

For daily orthopedic adult insoles

BM08



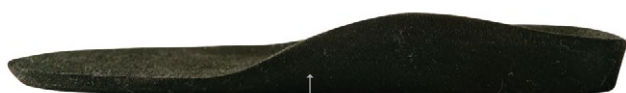
50 Sh., 2 mm

15 Sh., 6,4 mm

35 Sh., 15 mm

For elastic sport insoles with extra shock absorber layer

BM09



45 Sh., 40 mm

For patients with diabetes and rheumatism and cerebral paralysis

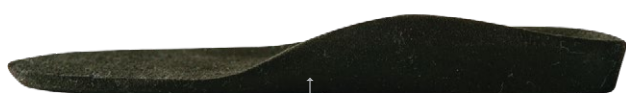
BM10



35 Sh., 40 mm

For patients with diabetes and rheumatism and cerebral paralysis

BM11



55 Sh., 40 mm

For daily orthopedic adult men insoles with weight over 75 kg

BM13



35/55 Sh., 40 mm

For daily orthopedic adult with extra midfoot suport

BM14



30 Sh., 2 mm

25 Sh., 15 mm

For children preventing insoles

BM15



30 Sh., 2 mm

55 Sh., 40 mm

For daily orthopedic adult men insoles with weight over 75 kg with schock absorbing layer

NATURAL LEATHER

LN02

Calflining cream,
0.7-0.9 mm



LN45

Natura lining
burro,
1.0-1.1 mm



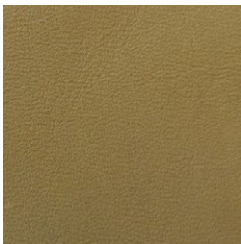
LN26

Lamnappa
naturel,
0.7-0.9 mm



LN22

Calflining camel,
0.9-1.1 mm



LN24

Calflining nero,
0.7-0.9 mm



LN32

Horse leather,
0.9-1.1 mm



MICROFABRIC

LN18

Suetex beige,
0.7 mm



LN17

Suetex grey,
0.7 mm



LN19

Micro suetex
black,
0.6 mm



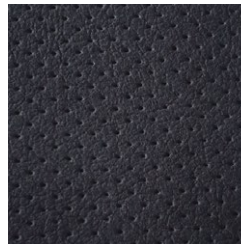
LN33

ON STEAM
perforated
beige,
0.8 mm



LN34

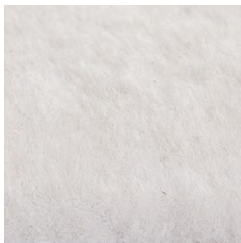
ON STEAM
perforated
black,
0.8 mm



THERMO

LN28

Natural fur
off white



LN30

Natural fur
brown



LN27

Natural fur
black



LN44

Foam laminated
velour dark grey,
4 mm



PADDED

LN50

Blue textile +
foam,
2.5 mm



LN51

ON STEAM
black + EVA
2.8 mm



BREATHABLE

LN47

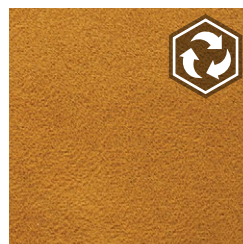
DuraFit PLUS,
1.1 mm



RECYCLED

LN46

Recycled
camel,
1 mm



Recycled material



ORTOPEDIJOS TECHNIKA

Krėvės pr. 129, LT-50312 Kaunas, Lithuania
E-mail: info@orthopedic-pro.com

Phone +370 37 312 686
Mobile +370 665 28 542

www.orthopedic-pro.com

